

The power of storytelling for policy makers

CLS Tools and methods



Policy is complicated.

How can you connect policy to public experience?



Literature can help.

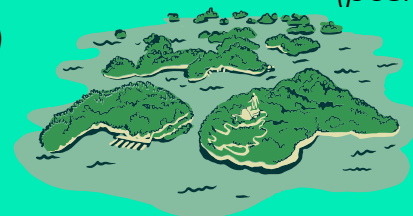
Use familiar narratives to make claims about the present and imagine the future.

Example: connect to Island Culture with Sentiment Analysis

Sentiment analysis: algorithmic review of large sets of text, i.e. novels, to locate and categorise opinions.

*“tangible landmarks of people and nature”
(positive)*

*“places of refuge”
(positive)*



*“lost paradise”
(negative)*

*“cultural crossroads”
(neutral)*



CLS INFRA has identified ways to use literature in policy making based on interviews with policy makers.

Find the report*, interviews, video explainers and more resources:
clsinfra.io/resources/beyond-academia

**D3.5: Understanding User Requirements beyond Academic Research, 2024.*



Computational Literary Studies Infrastructure (CLS INFRA) has received funding from the European Union’s Horizon 2020 research and innovation programme under grant agreement No 101004984.