

The power of storytelling for GLAM

CLS Tools and methods



Making access Equitable and Engaged



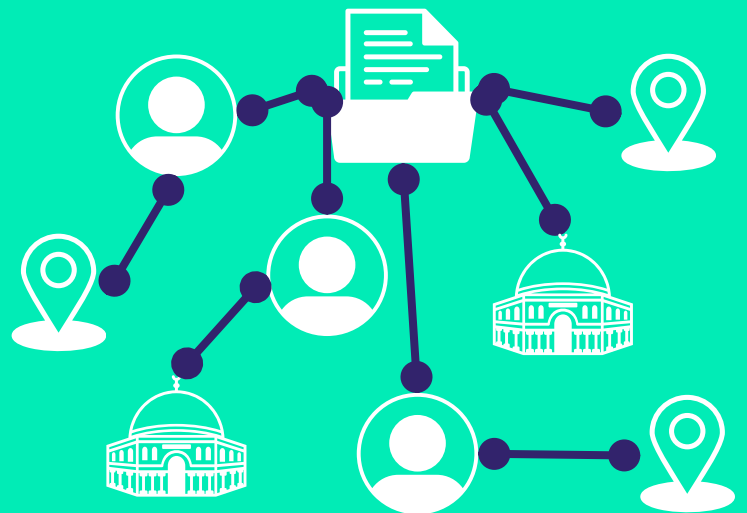
Leveraging CLS tools in line with digitisation processes offers opportunities for improving information literacy, overcoming budget constraints, and serving diverse populations.

Example: EHRI

(European Holocaust Research Infrastructure)

<https://blog.ehri-project.eu/about>

Method: Named Entity Recognition
Algorithmically search vast collections of testimonials to identify all people, places, and institutions. These can then be linked to your catalogue and studied for context and relation.



CLS INFRA has identified ways to use literature in policy making based on interviews with policy makers.



Find the report*, interviews, video explainers and more resources:
clsinfra.io/resources/beyond-academia

**D3.5: Understanding User Requirements beyond Academic Research, 2024.*



Computational Literary Studies Infrastructure (CLS INFRA) has received funding from the European Union's Horizon 2020 research and innovation programme under grant agreement No 101004984.